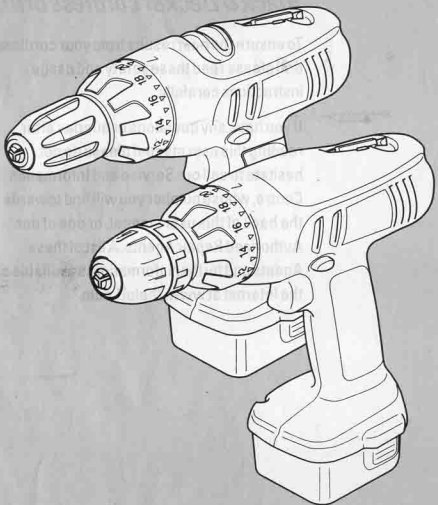


M-A18397



GUARANTEE CARD FOR THE UK, IRELAND AND SOUTH AFRICA

**South Africa: Black & Decker South Africa (Pty) Ltd, Suite no 107, PostNet X65, Halfway House 1685
United Kingdom & Ireland: PO Box 821, Slough, Berkshire, SL1 3AR**

P/N: 5147121-00



Please complete this section immediately after the purchase of your cordless drill
and post it to the Black & Decker address in your country (above).

Model No.

Serial No.

Product No.

Please indicate, using the boxes, the name of the

Manufacturer, your country, the date of purchase, the name of the

By (Retailer) (Consumer)

Name of Retailer

Name of Consumer

Date of Purchase

Name of Manufacturer

Congratulations!

On the purchase of your Black & Decker cordless drill.

To ensure the best results from your cordless drill please read these safety and usage instructions carefully.

If you have any questions or queries after reading this user manual please do not hesitate to call our Service and Information Centre, whose number you will find towards the back of this user manual, or one of our Authorised Repair Agents. A list of these Agents and further information is available on the Internet at www.2helpU.com.

Contents

Page4	Safety instructions Additional drill and charger safety instructions
Page5	Electrical safety Mains plug replacement
Page6	Fuse replacement Extension cables Unwanted tools and the environment The Black & Decker guarantee After sales service for your Black & Decker product Our after sales service policy Accessories Extra batteries Technical data Features
Page7	Variable speed Brake Gear ratio selector Combined percussion action and torque adjustment collar
Page8	Fast charger and detachable battery pack Charging your cordless drill Fitting the drill or screwdriver bit Changing the chuck
Page9	Handy hints Tool care Rechargeable batteries and the environment EC declaration of conformity Black & Decker phone numbers and addresses Guarantee card

Intended use

Your Black & Decker drill/screwdriver was designed for screwdriving applications and for drilling in wood, metal and plastics. This tool is intended for consumer use only. Your Black & Decker charger has been designed for charging Black & Decker batteries of the type specified with this tool.

General Safety Rules

WARNING! Read all instructions. Failure to follow all instructions listed below may result in electric shock, fire and/or serious injury. The term "power tool" in all of the warnings listed below refers to your mains operated (corded) power tool or battery operated (cordless) power tool.

SAVE THESE INSTRUCTIONS

- 1) **Work area**
 - a) Keep work area clean and well lit. Cluttered and dark areas increase the risk of accidents.
 - b) Do not operate power tools in explosive atmospheres, such as in the presence of flammable liquids, gases or dust. Power tools create sparks which may ignite the dust or fumes.
 - c) Keep children and bystanders away while operating a power tool. Distractions can cause you to lose control.
- 2) **Electrical safety**
 - a) Power tool plugs must match the outlet. Never modify the plug in any way. Do not use any adapter plugs with earthed (grounded) power tools. Unmodified plugs and matching outlets will reduce risk of electric shock.
 - b) Avoid body contact with earthed or grounded surfaces such as pipes, radiators, ranges and refrigerators. There is an increased risk of electric shock if your body is earthed or grounded.
 - c) Do not expose power tools to rain or wet conditions. Water entering a power tool will increase the risk of electric shock.
 - d) Do not abuse the cord. Never use the cord for carrying, pulling or unplugging the power tool. Keep cord away from heat, oil, sharp edges or moving parts. Damaged or entangled cords increase the risk of electric shock.
 - e) When operating a power tool outdoors, use an extension cord suitable for outdoor use. Use of a cord suitable for outdoor use reduces the risk of electric shock.
- 3) **Personal safety**
 - a) Listen. Stay alert. Watch what you are doing and use common sense when operating a power tool. Do not use a power tool while you are tired or under the influence of drugs, alcohol or medication. A moment of inattention while operating power tools may result in serious personal injury.
 - b) Use safety equipment. Always wear eye protection. Safety equipment such as dust mask, non-slip safety shoes, hard hat, or hearing protection used for appropriate conditions will reduce personal injuries.
 - c) Avoid accidental starting. Ensure the switch is in the off position before plugging in. Carrying power tools with your finger on the switch or plugging in power tools that have the switch on invites accidents.
 - d) Remove any adjusting key or wrench before turning the power tool on. A wrench or a key left attached to a rotating part of the power tool may result in personal injury.
 - e) Do not overreach. Keep proper footing and balance at all times. This enables better control of the power tool in unexpected situations.
 - f) Dress properly. Do not wear loose clothing or jewellery. Keep your hair, clothing and gloves away from moving parts. Loose clothes, jewellery or long hair can be caught in moving parts.
 - g) If devices are provided for the connection of dust extraction and collection facilities, ensure these are connected and properly used. Use of these devices can reduce dust related hazards.
- 4) **Power tool use and care**
 - a) Do not force the power tool. Use the correct power tool for your application. The correct power tool will do the job faster and safer at the rate for which it was designed.
 - b) Do not use the power tool if the switch does not turn on and off. Any power tool that cannot be controlled with the

switch is dangerous and must be repaired.

- c) Disconnect the plug from the power source before making any adjustments, changing accessories, or storing power tools. Such preventive safety measures reduce the risk of starting the power tool accidentally.
- d) Store idle power tools out of the reach of children and do not allow persons unfamiliar with the power tool or these instructions to operate the power tool. Power tools are dangerous in the hands of untrained users.
- e) Maintain power tools. Check for misalignment or binding of moving parts, breakage of parts and any other condition that may affect the power tools operation. If damaged, have the power tool repaired before use. Many accidents are caused by poorly maintained power tools.

- f) Keep cutting tools sharp and clean. Properly maintained cutting tools with sharp cutting edges are less likely to bind and are easier to control.
- g) Use the power tool, accessories and tool bits etc., in accordance with these instructions and in the manner intended for the particular type of power tool, taking into account the working conditions and the work to be performed. Use of the power tool for operations different from intended could result in a hazardous situation.
- 5) **Battery tool use and care**
 - a) Ensure the switch is in the off position before inserting battery pack. Inserting the battery pack into power tools that have the switch on invites accidents.
 - b) Recharge only with the charger specified by the manufacturer. A charger that is suitable for one type of battery pack may create a risk of fire when used with another battery pack.
 - c) Use power tools only with specifically designated battery packs. Use of any other battery packs may create a risk of injury and fire.
 - d) When battery pack is not in use, keep it away from other metal objects like paper clips, coins, keys, nails, screws, or other small metal objects that can make a connection from one terminal to another. Storing the battery terminals together may cause burns or a fire.
 - e) Under abusive conditions, liquid may be ejected from the battery; avoid contact. If contact accidentally occurs, flush with water. If liquid contacts eyes, additionally seek medical help. Liquid ejected from the battery may cause irritation or burns.
 - f) Service
 - a) Have your power tool serviced by a qualified repair person using only identical replacement parts. This will ensure that the safety of the power tool is maintained.

Additional safety instructions for drill/screwdrivers

- a) Before drilling into walls, floors or ceilings, check for the location of wires and pipes.
- b) Avoid touching the tip of a drill bit just after drilling, as it may be hot.
- c) Wear ear protectors with impact drills. Exposure to noise can cause hearing loss.
- d) Use auxiliary handles supplied with the tool. Loss of control can cause personal injury.

ADDITIONAL DRILL AND CHARGER SAFETY INSTRUCTIONS

- **Danger!** 240 volts are present at the charging terminals. Do not probe with conductive objects or you will risk an electric shock.
- **Danger!** Do not insert the energy pack case if cracked or damaged, do not insert into the charger if you will risk an electric shock.
- The charger is designed for indoor use only.
- Do not operate the charger if it has received a sharp blow, been dropped, or otherwise damaged in any way. Take it to a Black & Decker authorised repairer.

- Never attempt to connect two chargers together.
- Always disconnect the supply before making or breaking connections to the battery.
- Be aware that this tool is always in an operating condition, because it does not have to be plugged into an electrical outlet. Keep the switch control lever in the "Off" position when the tool is not in use or when changing accessories.
- When drilling or driving screws into walls, floors etc., check wherever "live" electrical wires may be encountered. Do not touch any front metal parts of the tool! Hold the tool only by the plastic housing.
- Do not store the tool in locations where the temperature may reach or exceed 50°C (120°F) (such as outside sheds or metal buildings in summer).
- Do not incinerate the drill/driver even if it is severely damaged or completely worn out. The battery pack can explode in a fire.
- A small leakage of liquid from the battery cells may occur under extreme usage, charging or temperature conditions. This does not indicate a failure. However, if the outer seal is broken and this leakage gets on your skin:
 - Wash quickly with soap and water.
 - Neutralise with a mild acid such as lemon juice or vinegar.
 - If battery liquid gets into your eyes, flush them with clean water for a minimum of 10 minutes and seek immediate medical attention. (Medical note: The liquid is a 25-35% solution of potassium hydroxide.)

- Do not attempt to open the housing of your drill or charger.
- The supply cord of the charger should not be replaced by the customer, if the cord is damaged it should be replaced at an authorised Black & Decker service repair agent.
- Ensure that the battery pack is correct for the tool.
- Ensure that the outside surface of the battery pack or tool is clean and dry before plugging into the charger.
- Ensure that the battery is charged using the correct charger provided with the tool or recommended by the manufacturer. Incorrect use may result in a risk of electric shock, overheating or leakage of corrosive liquid from the battery.
- Do not attempt to recharge non-rechargeable batteries.

Save these instructions!

ELECTRICAL SAFETY

Be sure the supply is the same as the voltage given on the rating plate. Your charger is fitted with a two-core cable and plug.

MAINS PLUG REPLACEMENT

Should the mains plug or cordset of the product be damaged, it must only be replaced by an authorised Black & Decker service agent because special purpose tools are required.

MAINS PLUG REPLACEMENT ON 1 HOUR CHARGER (UK ONLY)

If you are using a 1 hour charger and the mains plug needs replacing, and you are competent to do this, proceed as instructed below.

If you are in doubt, contact a Black & Decker service agent or a qualified electrician.

- Disconnect the plug from the power supply.
- Cut off the plug and dispose of safely. A plug with bared copper conductors is very dangerous if engaged in a live socket outlet.
- Only fit BS1363A approved plugs fitted with the correctly rated fuse.

Note: Fuses do not give personal protection against electric shock.

- The cable wire colours, or a letter, will be marked at the connection point of most good quality plugs. Attach the wires to their respective points in the plug (see diagram). Brown is L (live) and blue is N (neutral).

Fit a BS1363A approved resilient plug

Fit a 3 or 5 amp fuse to BS1362

Connect blue to N (neutral)

Connect brown to L (live)

Make sure that the outer sheath of the cable is held firmly by the clamp

230 volts AC only
Never use a light socket

- Before replacing the top cover of the plug ensure that the cable restraint is holding the outer sheath of the cable firmly and that the two leads are correctly fixed at the terminal screws. If the fuse cover is missing or damaged do not use the plug.

For replacement of detachable fuse covers, contact a Black & Decker authorised repair agent.

Warning! Never connect or neutral wires to the earth pin marked E or \perp .

FUSE REPLACEMENT ON 1 HOUR CHARGER (UK ONLY)

• If you are using a 1 hour charger the plug is fitted with a 3 or 5 amp fuse which should only be replaced with an identical fuse approved to BS1362.


Note: Fuses do not give personal protection against electric shock.

• After changing the fuse in your plug always ensure the fuse cover is refitted. If the fuse cover is missing or damaged do not use the plug. For replacement or detachable fuse covers contact a Black & Decker authorised repair agent.

EXTENSION CABLES

Up to 30m (100ft) of Black & Decker 1.00mm², 2-core extension cable (or 3-core extension cordset, in Australia and New Zealand) can be used without undue loss of power. **Note:** An extension cable should not be used unless absolutely necessary. Use of an improper extension cable could result in a risk of fire and electric shock. If an extension cable must be used, make sure it is properly wired, contains the correct rated fuse as recommended in its literature and is in good electrical condition.

UNWANTED TOOLS AND THE ENVIRONMENT

 Should you find one day that the tool needs replacement or is of no further use, think of the protection of the environment. Black & Decker service agents will accept old tools and will dispose of them in an environmentally safe way.

THE BLACK & DECKER GUARANTEE (UK, AUSTRALIA AND NEW ZEALAND ONLY)

If the Black & Decker product becomes defective due to faulty materials and workmanship, within 24 months from the date of purchase, we guarantee to either replace all defective parts or, at our discretion, replace the unit free of charge provided that:

- The product is returned to us or our authorised repairers with evidence of date of purchase.
- The product has not been used for trade, professional or hire purposes.
- The product has not been subjected to misuse or neglect.
- The product has not sustained any damage through foreign objects, substances or accidents.

• Repairs have not been attempted by anyone other than our authorised repair distributors. This guarantee is offered as an extra benefit and is additional to the customers statutory rights.

AFTER SALES SERVICE FOR THE BLACK & DECKER PRODUCT (UK, AUSTRALIA AND NEW ZEALAND ONLY)

Black & Decker offers a nationwide network of authorised service agents. The use of other than genuine Black & Decker accessories and parts may damage or reduce the performance of your Black & Decker product and may also endanger the user. The terms and conditions of the warranty may also be effected.

OUR AFTER SALES SERVICE POLICY (UK, AUSTRALIA AND NEW ZEALAND ONLY)

It is our aim that all Black & Decker customers should be totally satisfied with their Black & Decker product and after sales service, but if help or advice is needed please contact your local Black & Decker authorised repair agent who will be happy to help. Full details of our after sales service and a list of these agents can be found on the Internet at www.2helpu.com. Alternatively, call our Service and Information Centre whose number you will find towards the back of this manual.

ACCESSORIES

Black & Decker offer a complete range of screwdriver and drill bits. We recommend that only Black & Decker accessories are used. To enhance the performance of your drill further we recommend the use of Bullet Drill bits. Please consult your local Black & Decker dealer for details.

EXTRA BATTERIES

You can buy an extra battery to improve the run time capacity of your drill. Only buy a Black & Decker battery of the same voltage as your drill. **Only use Black & Decker batteries.**

TECHNICAL DATA

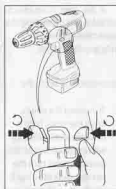
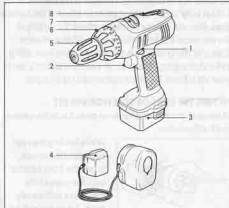
The level of sound pressure of the tool is in accordance with EEC legislation. It is recommended that you take appropriate measures for the protection of your hearing if the sound level seems uncomfortable. This normally equates to a sound pressure in excess of 85dB (A).

Note: This user manual also covers catalogue numbers ending with a letter suffix. Refer to your carton for details of your product.

FEATURES

1. Forward/reverse and lock-off switch
2. Variable speed trigger switch

3. Battery pack
4. Charger
5. Keyless chuck
6. Combination percussion action and torque adjustment collar
7. Gear ratio selector
8. Screwdriver bit



The forward/reverse and lock-off switch controls the direction of rotation of the chuck. In the centre position, it prevents starting of your drill when changing accessories or during storage.



- The variable speed trigger switch is used to operate your drill in all modes of operation. It also controls the speed of your drill.
- The combination percussion action and torque adjustment collar enables the selection of hammer mode and also sets the torque loading when screwdriving.
- The gear ratio selector enables the setting of the best speed for screwdriving, or the best speed for drilling.
- Your drill is supplied with a double function screwdriver bit. To remove, pull firmly from the recess. To replace, push firmly until it clicks into place.

VARIABLE SPEED



Your drill has a variable speed trigger switch. The more the trigger switch is depressed, the higher the speed of your drill. The change in

speed is controlled continuously using the trigger switch or in two stages using the gear ratio selector. The maximum speed achieved using the trigger switch depends on the gear ratio selector setting.

BRAKE

The brake switch stops the rotation of the chuck in less than 1 second. This feature is useful when adjusting the seating of screws, and for driving quickly a large number of screws.

GEAR RATIO SELECTOR

To change the setting of the gear ratio selector, proceed as follows:



To select the low speed setting (screwdriving and high torque applications), slide the selector switch to the front position. The number '1' appears.

To select the high speed setting (drilling and hammer drilling), slide the selector switch to the rear position. The number '2' appears. If necessary, when changing the gear ratio, depress the trigger switch sufficiently to rotate the chuck slowly. **Warning!** Do not change gear when the chuck is rotating at other than low speed.

COMBINED PERCUSSION ACTION AND TORQUE ADJUSTMENT COLLAR



To select percussion action (hammer drills), rotate the collar until the hammer symbol is in line with the indicator on the top of your drill housing.



To select non-masonry drilling, rotate the collar until the drill symbol is in line with the indicator on the top of your drill housing.

The torque adjustment collar has 14 positions on hammer drill and 23 positions on non-hammer drill and provides adjustment of the torque necessary to seat screws of a given size in a particular material.

Proceed as follows:

Set the torque adjustment collar to position '1'. Fit and tighten the first screw.

If the clutch of your drill starts to slip before the screw is correctly seated, rotate the torque adjustment collar, as necessary, until the clutch slips when the head of the screw is flush with the surface of the material. Use this torque setting when fitting the remaining screws.

SLOW CHARGER AND DETACHABLE BATTERY PACK

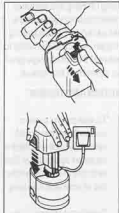
Your drill has a slow charger and detachable battery pack. To increase the availability of your drill you can purchase an additional battery pack or a 1 hour charger available as an accessory or spare part.

CHARGING YOUR CORDLESS DRILL

Important! The battery pack in your drill is not charged when supplied as new. A new battery, or one which has not been used for an extended period, achieves full performance only after approximately 5 charging and discharging cycles. Before attempting to charge your drill, read all the safety instructions.

To charge your drill, proceed as follows:

Put the forward/reverse switch in the centre (lock-off) position. Remove all accessories from the chuck.



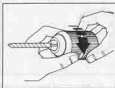
To remove the battery pack, depress the two release buttons and withdraw the battery pack. Plug the charger into a standard 220/240V socket. Place the battery pack in the charger. While charging, your battery pack may hum and become warm to the touch; this is normal. After normal usage your power pack should be fully charged in 3 hours or less. If your power

pack is run-down completely it may take up to 8 hours to become fully charged. Your power pack was sent from the factory in an uncharged condition; before attempting to use it, it must be charged for at least 6 hours. To prolong your power packs' life, avoid leaving it on charge for more than 8 hours. Although

overcharging is not a safety concern, it can reduce the overall life of your power pack. Disconnect the plug from the electricity supply before making or breaking connections to the battery pack. For the longest battery life, charge the battery pack in an air temperature of approximately 24°C/75°F. Do not charge the battery pack if the air temperature is below 5°C/41°F or above 35°C/95°F. The charger can remain in the electrical socket indefinitely without adverse effect. If the battery pack does not charge correctly, check the supply at the electrical socket with a lamp or other appliance. If the electricity supply is satisfactory and your drill is still not charging, take or send your drill and charger to your local Black & Decker authorised repair agent.

FITTING THE DRILL OR SCREWDRIVER BIT

Make sure the forward/reverse switch is in the centre (lock-off) position.



While holding the rear section of the chuck, rotate the front section until the jaws of the chuck are sufficiently open. Insert the drill bit in the jaws of the chuck.

Hold the rear section of the chuck while tightening the front section. Tighten the two sections firmly in opposite directions to securely grip the drill bit.

CHANGING THE CHUCK

Make sure the forward/reverse switch is set to the centre (lock-off) position.



To remove the chuck, open the jaws, hold it firmly in one hand and with a screwdriver held in the other hand, turn the set screw in the chuck clockwise approximately one turn, to loosen it. Place an allen key in the

chuck and tighten the jaws. Give the allen key a short powerful blow in an anti-clockwise direction with a hammer to loosen the chuck on the spindle. Remove the allen key. Use the screwdriver to turn the set screw clockwise until it totally disengages from the spindle. Remove the chuck from the spindle by rotating it anti-clockwise. To fasten the chuck, put it on the thread and turn it clockwise until it stops. Put in the screw and turn it anti-clockwise until it is fully firm.

HANDY HINTS

- Clamp the workpiece securely.
- When drilling thin material, use a 'back up' block to prevent damage to the workpiece when the drill breaks through. Just before the tip breaks through to the opposite side, decrease the pressure on the drill; this will give a clean hole.
- Use sharp drill bits only.
- When using your drill as a screwdriver, always use the correct size and type of screwdriver bit.
- When using your drill as a screwdriver, lubricating the screws can assist in fitting the screw. The usual lubricants are either soap or washing liquid. Apply a little to the screw.
- When drilling wood, use twist drill bits.
- When drilling masonry, use carbide tipped drill bits.
- When drilling metal, use high speed twist drill bits.
- When drilling ferrous metals, use a lubricant. Iron and brass are drilled without a lubricant.
- Make an indentation with a centre punch at the centre of the required hole. This will improve the accuracy.
- Always apply pressure in a straight line with the drill bit.

TOOLCARE



After use, remove the drill bit, open the chuck jaws fully and tap the side of the chuck to remove any sawdust. Do not put excessive pressure on your drill.

Use sufficient pressure to keep your drill/driver biting, but do not push hard enough to stall the motor.

Protecting the environment



Separate collection. This product must not be disposed of with normal household waste. You should find one day that your Black & Decker product needs replacement, or if it is of no further use to you, do not dispose of it with household waste. Make this product available for separate collection.



Separate collection of used products and packaging allows materials to be recycled and used again. Re-use of recycled materials helps prevent environmental pollution and reduces the demand for raw materials.

Local regulations may provide for separate collection of electrical products from the household, at municipal waste sites or by the retailer when you purchase a new product. Black & Decker provides a facility for the collection and recycling of Black & Decker products once they have reached the end of their working life. To take advantage of this service please return your product to any authorised repair agent who will collect them on our behalf.

You can check the location of your nearest authorised repair agent by contacting your local Black & Decker office at the address indicated in this manual. Alternatively, a list of authorised Black & Decker repair agents and full details of our after-sales service and contacts are available on the Internet at: www.zheplu.com

RECHARGEABLE BATTERIES AND THE ENVIRONMENT

Black & Decker cordless tools use nickel cadmium (NiCad) batteries or battery packs which can be charged many times to give long life and repeatedly full power.



This symbol indicates the NiCad batteries contained within this unit must be disposed of properly and not discarded in everyday household waste which may be disposed of in an incinerator or landfill site. NiCad batteries can be harmful to the environment and can explode when exposed to fire.

Do not incinerate.

Therefore, when your tool or battery pack needs replacing, think of the protection of our environment.

Black & Decker recommends the following:

- Discharge batteries completely by running the unit until the energy is completely discharged and then remove from the tool.
- Take the battery pack to your local dealer or your local recycling station. If necessary, contact your local council for disposal information. The collected batteries will be disposed of properly and/or used for recycling purposes whilst protecting the environment.

Note: You as a customer are responsible for proper disposal or recycling of the battery pack.

EC DECLARATION OF CONFORMITY

We declare that units:

KC1462F, KC1482F conform to 98/37/EC, 89/336/EEC, EN60745, EN60335, EN55104, EN50144, EN61000
A weighted sound pressure 70dB (A)
A weighted sound power 83dB (A)
Hand/arm weighted vibration <2.5m/s²

Colin Wills

Colin Wills - Director of Engineering
BDF, 4/F, 2-di Wang Street, Tai Po Industrial Estate,
Tai Po NT, Hong Kong

The Black & Decker policy is one of continuous improvement to our product and as such we reserve the right to change the product specification without prior notice.

Australia
Black & Decker (Australia) Pty. Ltd. Tel. 03-8720 5100
20 Fletcher Road, Mooroolbark, Fax 03-9727 5940
Victoria, 3138

New Zealand
Black & Decker Tel. 09 579 7600
81 Hugo Johnston Drive Fax 09 579 8200
Penrose, Auckland, New Zealand

United Kingdom
Black & Decker Tel. 01753 511234
210 Bath Road Fax 01753 551155
Slough, Berkshire SL1 3YD Helpline 01753 574277

Address of the dealer where your cordless drill was purchased:

Date of your purchase:

Name: _____

House number or name and street: _____

Town: _____

County or state: _____

Postcode: _____

Country: _____

Product catalogue number: **KC** _____ / _____

Data protection act. Tick this box if you prefer not to receive information from Black & Decker or other companies.

Yes

No

Was your cordless drill a gift?

Was your cordless drill your first purchase?

Was your cordless drill bought as a replacement?

What was the price of your cordless drill? _____

Address of the dealer where your cordless drill was purchased: _____
