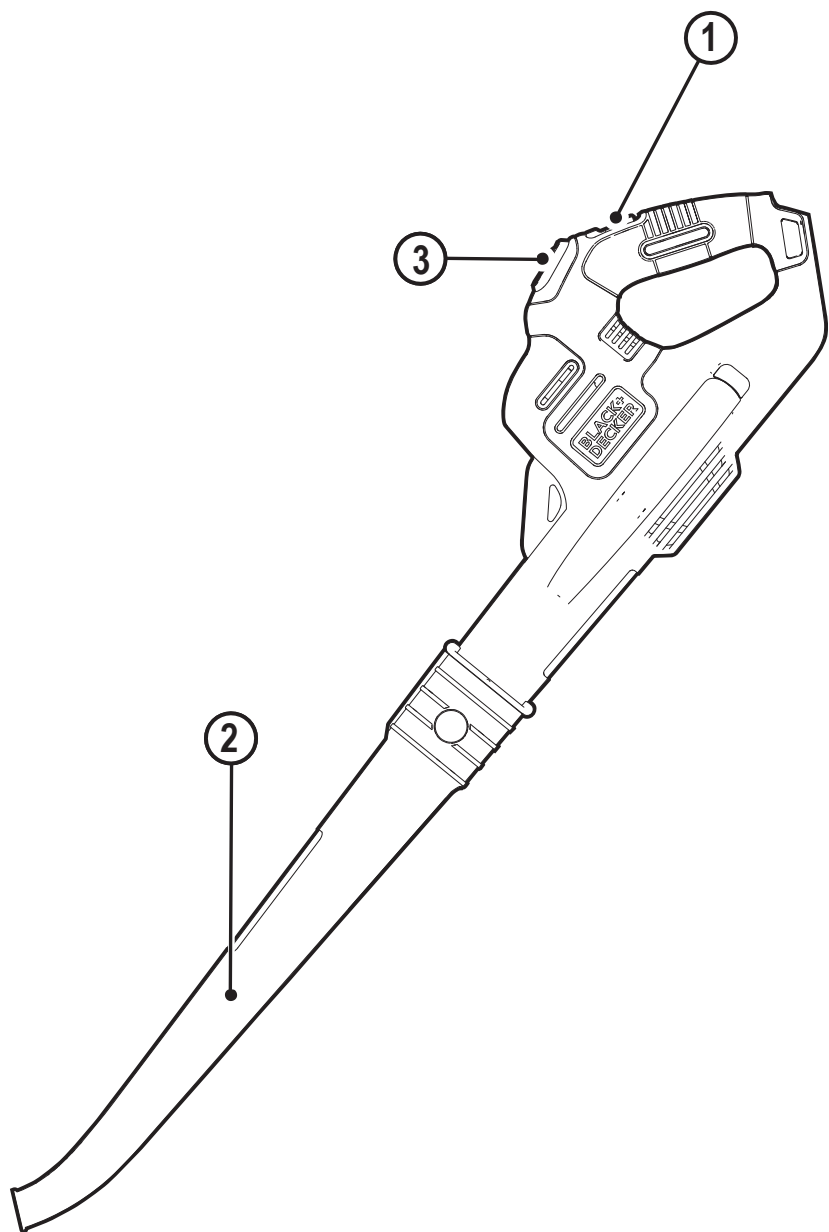


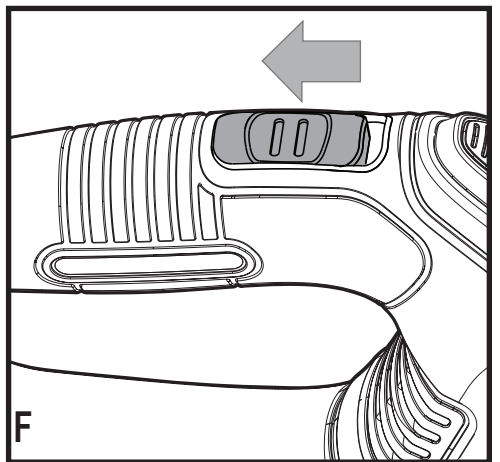
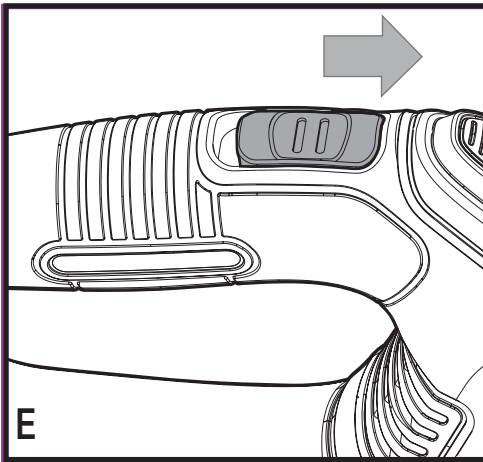
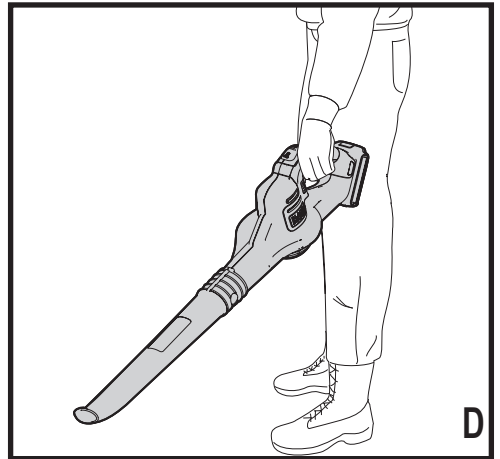
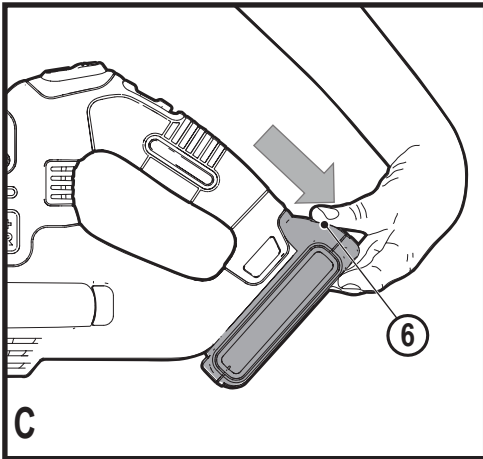
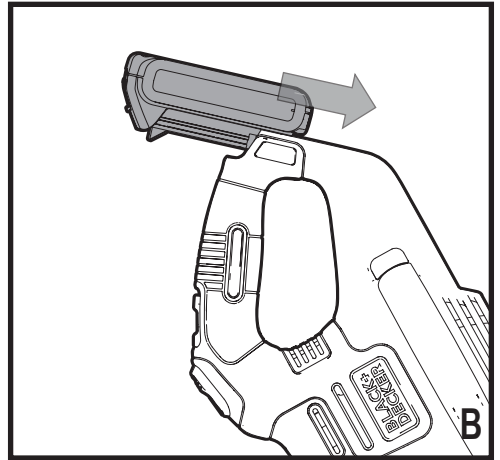
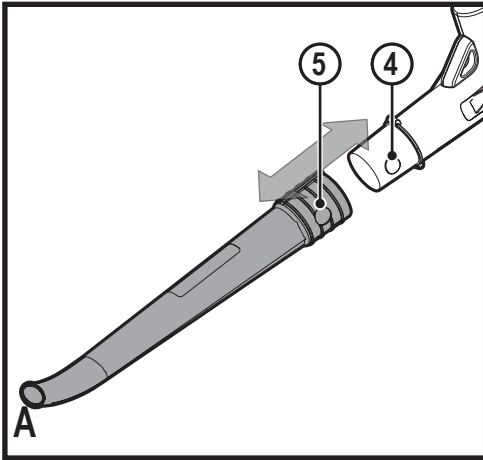
[www.blackanddecker.com](http://www.blackanddecker.com)

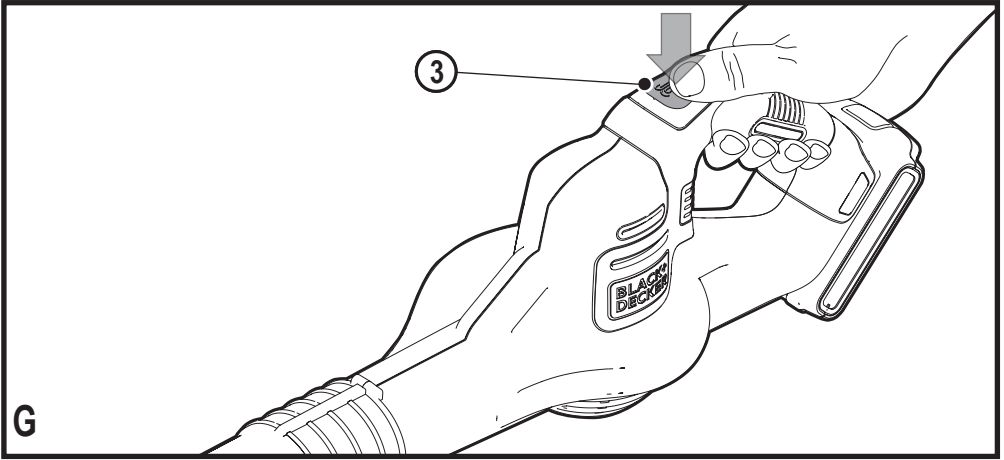
**GWC1820PC**

**English**  
**简体中文**

**5**  
**10**







## GWC1820PC BLOWER

### Technical data

		GWC1820PC
Input Voltage	V <sub>ac</sub>	18
No-Load Speed	/min	10,000 - 12,500
Weight	kg	1.5

### Intended use

Your BLACK+DECKER GWC1820PC blower have been designed for leaf clearing. This appliance is intended for consumer use only.

## Safety instructions

**Warning!** When using mains-powered/cordless appliances, basic safety precautions, including the following, should always be followed to reduce the risk of fire, electric shock, personal injury and material damage.

- ◆ Read all of this manual carefully before operating the appliance.
- ◆ The intended use is described in this manual. The use of any accessory or attachment or the performance of any operation with this appliance other than those recommended in this instruction manual may present a risk of personal injury.
- ◆ Retain this manual for future reference.

## Using your appliance

Always take care when using the appliance.

- ◆ Always use safety glasses or goggles.
- ◆ Never allow children or people unfamiliar with the instructions to use the appliance.
- ◆ Do not allow children or animals to come near the work area or to touch the appliance or power supply cord.
- ◆ Close supervision is necessary when

the appliance is used near children.

- ◆ This appliance is not intended for use by young or infirm persons without supervision.
- ◆ This appliance is not to be used as a toy.
- ◆ Only use the appliance in daylight or good artificial light.
- ◆ Use in a dry location only. Do not allow the appliance to become wet.
- ◆ Avoid using the appliance in bad weather conditions, especially when there is a risk of lightning.
- ◆ Do not immerse the appliance in water.
- ◆ Do not open the body casing. There are not user-serviceable parts inside.
- ◆ Do not operate the appliance in explosive atmospheres, such as in the presence of flammable liquids, gases or dust.
- ◆ The appliance is only to be used with the power supply unit provided with the appliance.

## Residual risks.

Additional residual risks may arise when using the tool which may not be included in the enclosed safety warnings.

These risks can arise from misuse, prolonged use etc.

Even with the application of the relevant safety regulations and the implementation of safety devices, certain residual risks can not be avoided. These include:

- ◆ Injuries caused by touching any rotating/moving parts.
- ◆ Injuries caused when changing any parts, blades or accessories.
- ◆ Injuries caused by prolonged use of a tool. When using any tool for prolonged periods ensure you take regular breaks.

- ◆ Impairment of hearing.
- ◆ Health hazards caused by breathing dust developed when using your tool (example:- working with wood, especially oak, beech and MDF.)

## After use

- ◆ When not in use, the appliance should be stored in a dry, well ventilated place out of reach of children.
- ◆ Children should not have access to stored appliances.
- ◆ When the appliance is stored or transported in a vehicle it should be placed in the boot or restrained to prevent movement following sudden changes in speed or direction.

## Inspection and repairs

- ◆ Before use, check the appliance for damaged or defective parts. Check for breakage of parts and any other conditions that may affect its operation.
- ◆ Do not use the appliance if any part is damaged or defective.
- ◆ Have any damaged or defective parts repaired or replaced by an authorised repair agent.
- ◆ Never attempt to remove or replace any parts other than those specified in this manual.

## Additional safety instructions for blowers

The intended use is described in this manual. The use of any accessory or attachment or performance of any operation with this appliance other than those recommended in this instruction manual can present a risk of personal injury and/or damage to property.

- ◆ To protect your feet and legs while

- operating the appliance, always wear heavy duty footwear and long trousers.
- ◆ Always switch off your product, allow the fan to stop and remove the battery when:
  - ◆ You leave your product unattended.
    - ◆ Clearing a blockage.
    - ◆ Checking, adjusting, cleaning or working on your product.
      - ◆ If the appliance starts to vibrate abnormally.
  - ◆ Do not place the inlet or outlet of the vacuum near eyes or ears when operating. Never blow debris in the direction of bystanders.
  - ◆ Do not use in the rain or leave outdoors while it is raining.
  - ◆ Do not cross gravel paths or roads whilst your product is switched. Walk, never run.
  - ◆ Do not place your unit down on gravel while it is switched on.
  - ◆ Always be sure of your footing, particularly on slopes. Do not overreach and keep your balance at all times.
  - ◆ Do not place any objects into the openings. Never use if the openings are blocked - keep free of hair, lint, dust and anything that may reduce the airflow.

**Warning!** Always use your product in the manner outlined in this manual. Your product is designed to be used in an upright mode and if it is used in any other way it may result in injury. Never run your product whilst lying on it's side or upside down.

- ◆ The operator or user is responsible for accidents or hazards occurring to other people or their property.
- ◆ Do not use solvents or cleaning fluids

to clean your product. Use a blunt scraper to remove grass and dirt.

- ◆ Replacement fans are available from a Black & Decker service agent. Use on Black & Decker recommended spare parts and accessories.
- ◆ Keep all nuts bolts and screws tight to make sure that the appliance is in a safe working condition.

## Safety of others

- ◆ This appliance can be used by children aged from 8 years and above and persons with reduced physical, sensory or mental capabilities or lack of experience and knowledge if they have been given supervision or instruction concerning use of the appliance in a safe way and understand the hazards involved. Children shall not play with the appliance. Cleaning and user maintenance shall not be made by children without supervision.
- ◆ Children should be supervised to ensure that they do not play with the appliance.

## Additional safety instructions for batteries and chargers

### Batteries

- ◆ Never attempt to open for any reason.
- ◆ Do not expose the battery to water.
- ◆ Do not store in locations where the temperature may exceed 40 °C.
- ◆ Charge only at ambient temperatures

between 10 °C and 40 °C.

- ◆ Charge only using the charger provided with the tool.
- ◆ When disposing of batteries, follow the instructions given in the section "Protecting the environment".

## Chargers

- ◆ Use your BLACK+DECKER charger only to charge the battery in the tool with which it was supplied. Other batteries could burst, causing personal injury and damage.
- ◆ Never attempt to charge non-rechargeable batteries.
- ◆ Have defective cords replaced immediately.
- ◆ Do not expose the charger to water.
- ◆ Do not open the charger.
- ◆ Do not probe the charger.



The charger is intended for indoor use only.



Read the instruction manual before use.

## Electrical safety



Your charger is double insulated; therefore no earth wire is required. Always check that the mains voltage corresponds to the voltage on the rating plate. Never attempt to replace the charger unit with a regular mains plug.

- ◆ If the supply cord is damaged, it must be replaced by the manufacturer or an authorised BLACK+DECKER Service Centre in order to avoid a hazard.

### Labels on appliance

The following warning symbols are found on the appliance along with the date code:



Read the manual prior to operation.



Wear safety glasses or goggles when operating this appliance.



Wear suitable ear protectors when operating this appliance.



Always remove the battery from the appliance before performing any cleaning or maintenance .



Beware of flying objects. Keep bystanders away from the cutting area.



Do not expose the appliance to rain or high humidity.

### Features

This appliance includes some or all of the following features.

1. On / Off Switch
2. Tube
3. Power command button.

### Tube assembly

**Note:** Ensure the sweeper is switched off and the battery is removed before attaching or removing the sweeper tube. The tube must be assembled to the housing before use.

- ◆ To attach the tube to the sweeper, line up the tube with the sweeper housing as shown in Figure A.
- ◆ Push the tube into the sweeper housing until the lock button (4) engages the lock hole (5) in the tube.

### To install battery pack

- ◆ Insert battery pack into tool until an audible click is heard as shown in Figure B. Make sure battery pack is fully seated and fully latched into position.

### To remove battery pack

- ◆ Depress the battery release button (6) in the back of the battery pack and pull battery pack out of tool assembly as shown in Figure C.

### Operation

**Warning!** Always wear safety glasses. Wear a filter mask if the operation is dusty. Use of gloves, long pants and substantial footwear is recommended. Keep long hair and loose clothing away from openings and moving parts. THIS SWEEPER IS FOR HOUSEHOLD USE ONLY.

- ◆ Hold the sweeper with one hand as shown in Figure D and sweep from side to side with the nozzle several inches above the ground. Slowly advance keeping the accumulated pile of debris in front of you.

### Switching on and off

**Warning!** Use both hands to grip the product firmly when switching on.

**Warning!** Do not point unit discharge at self or bystanders.

- ◆ To switch the sweeper on, slide the on/off switch forward as shown in Figure E.
- ◆ To switch the sweeper off, slide the on/off switch back as shown in Figure F.

### POWERCOMMAND feature

The POWERCOMMAND feature (3) is located on the GWC1820PC tool handle as shown in Figure G. It allows you to optimise the tools performance and boost the power as needed.

- ◆ Switch the blower on.
- ◆ To activate the "Boost" mode, press and hold the POWERCOMMAND button down.
- ◆ To deactivate the "Boost" mode, release the POWERCOMMAND button.
- ◆ Operate in "Normal" mode for most sweeping needs. (Longer runtime will be achieved.)
- ◆ Activate "Boost" mode as needed to clear heavy or wet debris.

### Troubleshooting

Problem	Possible cause	Possible solution
Unit will not start.	Battery not installed properly.	Check battery installation.
	Battery not charged.	Check battery charging requirements.
Battery will not charge.	Battery not inserted into charger.	Insert battery into charger until green LED appears.
	Charger not plugged in.	Plug charger into a working outlet. Refer to "Important Charging Notes" for more details.
		Check current at receptacle by plugging in a lamp or other appliance.
		Check to see if receptacle is connected to a light switch which turns power off when you turn out the lights.



Problem	Possible cause	Possible solution
Battery will not charge.	Surrounding air temperature too hot or too cold.	Move charger and tool to a surrounding air temperature of above 40 degree F (4.5°C) or below 105 degree F (+40.5°C).

## Protecting the environment



Separate collection. Products and batteries marked with this symbol must not be disposed of with normal household waste.

Products and batteries contain materials that can be recovered or recycled reducing the demand for raw materials. Please recycle electrical products and batteries according to local provisions.

## Batteries



At the end of their useful life, discard batteries with due care for our environment:

- ◆ Run the battery down completely, then remove it from the tool.
- ◆ NiCd, NiMH and Li-Ion batteries are recyclable. Place the battery(s) in a suitable packaging to ensure that the terminals cannot be short-circuited. Take them to any authorised repair agent or a local recycling station.
- ◆ Do not short-circuit the battery terminals.
- ◆ Do not dispose of the battery(s) in a fire as this may result in a risk of personal injury or an Explosion.

## Service Information

BLACK+DECKER offers a full network of company-owned and authorized service locations throughout Asia. All BLACK+DECKER Service Centers are staffed with trained personnel to provide customers with efficient and reliable product service.

Whether you need technical advice, repair, or genuine factory replacement parts, contact the BLACK+DECKER location nearest to you.

## Note

- ◆ BLACK+DECKER's policy is one of continuous improvement to our products and, as such, we reserve the right to change product specifications without prior notice.
- ◆ Standard equipment and accessories may vary by country.
- ◆ Product specifications may differ by country.
- ◆ Complete product range may not be available in all countries. Contact your local BLACK+DECKER dealers for range availability.

**GWC1820PC****吹风机****技术参数**

GWC1820PC		
输入电压	伏特 <sub>交流</sub>	18
空载转速	/分	10,000 - 12,500
重量	千克	1.5

**设计用途**

您的 BLACK + DECKER GWC1820PC 吹风机专为园林或庭院清理树叶而设计。本设备仅供消费者使用。

**安全说明**

**警告!**使用主电源供电/无线的设备时,请务必始终遵守下列基本安全预防措施,从而降低火灾、触电、人身伤害和材料损坏等风险。

- ◆ 使用设备前,请仔细阅读本手册。
- ◆ 本手册描述了设备的设计用途。如果配件或附件的使用,或本设备的操作超出本手册建议的范围,则可能出现人身伤害的危险。
- ◆ 请保存好本手册,以备将来查阅。

**使用设备**

使用本设备时请务必小心。

- ◆ 请务必佩戴安全眼镜或护目镜。
- ◆ 切勿让不熟悉说明的儿童或人员使用本设备。
- ◆ 请勿让儿童或动物靠近工作区域或触碰设备或电源线。
- ◆ 在附近有儿童的情况下使用本设备时,必须保持密切关注。
- ◆ 在没有他人监督的情况下,小孩或体弱者不适宜使用本设备。
- ◆ 请勿将本设备用作玩具。
- ◆ 仅在日光或良好的人造光线下使用本设备。

- ◆ 仅在干燥的地方使用。请勿让设备变湿。
- ◆ 避免在恶劣天气条件下使用本设备,尤其是在有雷击危险的情况下。
- ◆ 请勿将本设备浸泡在水中。
- ◆ 请勿打开设备外壳。这些组件内没有可供用户维修的零件。
- ◆ 请勿在易爆环境(例如存在易燃液体、气体或粉尘的环境)中操作设备。
- ◆ 本设备只能使用随附的电源装置。

**剩余风险。**

使用工具时,可能出现本安全警示之外的其他剩余风险。

这些风险可能来自使用不当、使用时间过长等。

尽管遵守了相关的安全法规并采用了安全装备,某些剩余风险仍然是无法避免的。这些风险包括:

- ◆ 接触旋转/运动部件时所导致的伤害风险。
- ◆ 更换部件、锯片或配件时所导致的伤害风险。
- ◆ 长期使用工具所导致的伤害。长期使用工具时,请确保定时休息。
- ◆ 听力损伤。
- ◆ 吸入工具使用过程中产生的粉尘导致的健康危害(例如,锯切木材,特别是橡木、山毛榉和中密度纤维板时)。

**使用后**

- ◆ 不使用时,应将设备存放在干燥、通风良好且儿童无法触及的地方。
- ◆ 切勿让儿童接触存放的设备。
- ◆ 使用车辆存放或运输设备时,应将设备置于行李箱中或进行固定,以防止在车辆突然变速或转向时发生移动。

## 检查与维修

- ◆ 使用前,请检查设备是否受损或存在缺陷部件。检查部件是否破裂,以及是否存在影响设备操作的其它情况。
- ◆ 如果部件损坏或存在缺陷,请勿使用设备。
- ◆ 请将损坏或有缺陷的零件交由授权维修代理商进行维修与更换。
- ◆ 禁止试图拆卸或更换本手册规定之外的任何部件。

## 吹风机的附加安全说明

本手册描述了设备的设计用途。使用非本使用手册所建议的任何其他附件或配件,或者使用本设备执行非手册建议的任何其他操作,都可能存在人身伤害和/或财产损失的危险。

- ◆ 为了在操作设备时保护您的脚和腿,请务必穿着重型鞋类和长裤。
- ◆ 在下列情况下,请务必关闭产品,让风扇停止工作并取出电池:
  - ◆ 产品处于无人值守的状态时需确保:
    - ◆ 清除产品内部堵塞
    - ◆ 检查、调整、清洁或修理产品
    - ◆ 是否设备开始异常震动
- ◆ 操作时,请勿将真空入口和出口靠近眼睛或耳朵。切勿朝向旁观者吹送碎片。
- ◆ 请勿在雨中使用或在下雨时将其留在户外。
- ◆ 当产品处于开启状态时,请勿跨过砾石路径或道路。慢行,切勿奔跑。
- ◆ 当电源处于开启状态时,请勿将设备放在砾石上。

- ◆ 务必注意脚下,尤其是在斜坡上时。请勿将手伸得过远,并时刻注意身体的平衡。
- ◆ 请勿将任何物体放入产品开口中。如果产品开口被堵塞,切勿使用 - 避免头发、灰尘和任何可能减少气流的物体。

**警告!**始终按照本手册中列出的方式使用您的产品。您的产品设计用于竖立模式,如果以任何其他方式进行使用,可能会导致人身伤害。切勿在产品侧放或颠倒放置时使用。

- ◆ 操作员或用户需对其他人或其财产发生的事或危险负责。
- ◆ 请勿使用溶剂或清洁液清洁产品。请使用钝刮刀除去杂草和泥土。
- ◆ 可在 Black & Decker 服务代理商处获取替换风扇。请仅使用 Black & Decker 推荐的备件和配件。
- ◆ 请确保所有螺母螺栓和螺钉紧固,以确保设备处于安全工作状态。

## 他人安全

- ◆ 在有他人监督的情况下,或在接受过安全使用该产品的指导并已了解了可能存在的危险的情况下,8岁或以上的小孩,以及身体、感官或精神较差的人员,或者对该类产品缺少使用经验和认识的人员,也可以使用本设备。儿童不得耍玩本设备。在没有他人监督的情况下,禁止儿童使用本设备或对其进行维护保养。
- ◆ 应看管好儿童,以确保他们不将此设备当做玩具来玩。

## 电池和充电器的附加安全说明

### 电池

- ◆ 不论基于任何理由，都不要尝试打开电池。
- ◆ 不要将电池暴露在水中。
- ◆ 不要将电池存放在温度可能超过 40°C 的地方。
- ◆ 只在环境温度介于 10°C 和 40°C 之间的情况下充电。
- ◆ 只能使用本工具随附的充电器为电池充电。
- ◆ 弃置电池时，请遵循“保护环境”部分所提供的说明。

### 充电器

- ◆ 只能使用工具随附的 BLACK+DECKER 充电器为工具内的电池充电。其他电池可能会爆裂，导致人身伤害和损害。
- ◆ 切勿尝试为不可再充电的电池充电。
- ◆ 立即更换有缺陷的电源线。
- ◆ 请勿将充电器暴露在水中。
- ◆ 请勿打开充电器。
- ◆ 请勿刺破充电器。



充电器仅供室内使用。



使用前请阅读使用手册。

### 电气安全



本充电器为双重绝缘，因此无需接地线。请务必检查电源电压是否与铭牌上的电压一致。切勿尝试使用一般的电源插头替换充电器。

- ◆ 如果电源线损坏，必须让制造商或授权的 BLACK+DECKER 服务中心更换以避免发生危险。

#### 设备上的标签

设备上显示下列警示符号和日期码：



操作前请先阅读本手册。



使用本设备时，请佩戴防护眼镜或安全护目镜。



操作本设备时，请佩戴合适的护耳器。



在进行任何清洁或维护之前，请务必从设备中取出电池。



请小心飞行物体。请让旁观者远离切割区域。



请勿将本设备暴露在雨中或高湿度环境中。

#### 功能部件

本设备包含如下部分或全部部件。

1. 开关
2. 吹管
3. 风速加大按钮。

#### 吹管组件

注：在安装或拆卸清道器吹管之前，请确保清道器已关闭并取出电池。在使用前必须将吹管组装到清道器外壳上。

- ◆ 如需将吹管连接到清道器上，请将吹管与清道器外壳对齐，如图 A 所示。
- ◆ 将吹管推入清道器外壳，直到锁定按钮 (4) 与吹管中的锁定孔 (5) 啮合。

#### 安装电池组

- ◆ 如图 B 所示将电池组插入工具中，直至听到锁紧的咔嚓声。确保电池组完全就位并完全锁定到位。

#### 取出电池组

- ◆ 如图 C 所示按下电池组背后的电池释放按钮 (6)，然后将电池组从工具中拉出。

## 操作

**警告!**请务必佩戴安全眼镜。如果操作过程中存在灰尘,请戴上过滤面罩。建议穿戴手套,长裤和结实的鞋子。请保证长发和宽松的衣服远离设备开口和活动部件。该清扫器仅供家庭使用。

- ◆ 如图 D 所示,用一只手握住清扫器,并用喷嘴在地面上方几英寸处从一侧扫到另一侧。慢慢将累积的碎屑堆积在面前。

## 开启和关闭

**警告!**开启时请用双手牢牢抓住产品。

**警告!**请勿将设备排出口指向自己或旁观者。

- ◆ 如需开启清扫器,请向前滑动开关,如图 E 所示。
- ◆ 如需关闭清扫器,请向后滑动开关,如图 F 所示。

## POWERCOMMAND 功能

POWERCOMMAND 功能 (3) 位于 GWC1820PC 工具手柄上,如图 G 所示。它可以根据您的需要优化工具性能并提高功率。

- ◆ 开启吹风机。
- ◆ 如需使用“增强”模式,请按住“POWERCOMMAND”按钮。
- ◆ 如需取消“增强”模式,请松开“POWERCOMMAND”按钮。
- ◆ 在“正常”模式下操作可满足大多数清扫需求。(可满足更长的运行时间。)
- ◆ 根据需要使用“增强”模式以清除较重或潮湿的碎片。

## 故障排除

问题	可能原因	可能的解决方案
设备不启动。	电池未正确安装。	检查电池的安装。
	电池未充电。	检查电池是否需要充电。
电池无法充电。	未将电池插入到充电器中。	将电池插入充电器中,直至绿色 LED 灯亮起。
	充电器未插电。	将充电器插入正常工作的插座。请参阅“重要充电说明”了解更详细信息。 在插座中插入灯具或其它电器的插头,以检查插座中是否有电流。 检查插座是否与灯具开关相连接,关闭灯具开关时会切断电源。
	周围气温太高或太低。	将充电器和工具移至周围气温高于 40°F (4.5°C) 或低于 105°F (+40.5°C) 的地方。
电池无法充电。	周围气温太高或太低。	将充电器和工具移至周围气温高于 40°F (4.5°C) 或低于 105°F (+40.5°C) 的地方。

## 保护环境



分类回收。由此符号标记的产品和电池不得与普通家庭垃圾一起处理。

产品和电池包含可恢复或回收的材料,从而降低对原材料的需求。请根据当地供给回收电子产品和电池。

## 电池



在电池使用寿命结束时,请妥善处理以保护我们的环境。

- ◆ 耗尽电池的电力,然后将其从工具中取出。
- ◆ 镍镉、镍氢和锂离子电池可再循环利用。将电池置于合适的包装中,确保两极不会短路。将其送到任一授权维修代理商或当地的回收站。
- ◆ 请勿短接电池的两极。
- ◆ 请勿将电池弃置于火中,因为这会带来人身伤害或爆炸的风险。

## 服务信息

BLACK+DECKER 提供覆盖整个亚洲的公司隶属和授权服务地点。所有的 BLACK+DECKER 服务中心都具有训练有素的人员,为客户提供高效和可靠的产品服务。

不论您是需要技术建议、维修或原厂替换部件,请联系最靠近您的 BLACK+DECKER 地点。

## 备注

- ◆ BLACK+DECKER 的政策是持续改进我们的产品,因此,我们保留随时更改产品规格的权利,恕不另行通知。
- ◆ 标准设备和附件可能会因国家(地区)而异。
- ◆ 不同国家(地区)的产品规格也可能会有所不同。
- ◆ 并非所有的国家(地区)都可提供完整的产品系列。有关各产品系列的供货情况,请联系您当地的 BLACK+DECKER 代理商。

制造商:百得美国公司

地址:701 East Joppa Rd. Towson, Maryland, 21286, 美国

产地:江苏苏州

## 产品中有害物质的名称及含量

部件名称	有害物质					
	铅 (Pb)	汞 (Hg)	镉 (Cd)	六价铬 (Cr(VI))	多溴联苯 (PBB)	多溴二苯醚 (PBDE)
马达组件	0	0	0	0	0	0
机壳组件	0	0	0	0	0	0
控制部件 (开关, PCB 等)	X	0	0	0	0	0
电线组件	X	0	0	0	0	0
电池包	X	0	0	0	0	0
充电器	X	0	0	0	0	0
集尘装置	0	0	0	0	0	0
附件	0	0	0	0	0	0

本表格依据 SJ/T 11364 的规定编制。

O: 标识该有害物质在该部位所有均质材料中的含量均在 GB/T 26572 规定的限量要求以下。

X: 标识该有害物质至少在该部位的某一均质材料中的含量超出 GB/T 26572 规定的限量要求

备注: 本产品不必包含以上所述的所有部件。由于生产工艺和技术的不可替代性, 本产品中含有某些有害物质, 在环保使用期限内可以放心使用, 超过环保使用期限之后则应进入回收循环系统。

环保使用期限为“电子电气产品中含有的有害物质不会发生外泄或突变, 电子电气产品用户正常使用该电子电气产品不会对环境造成严重污染或对其人身、财产造成严重损害的期限”。



: 环保使用期限为 20 年。此环保使用期限不代表产品的安全使用期限和质量保证年限。



